



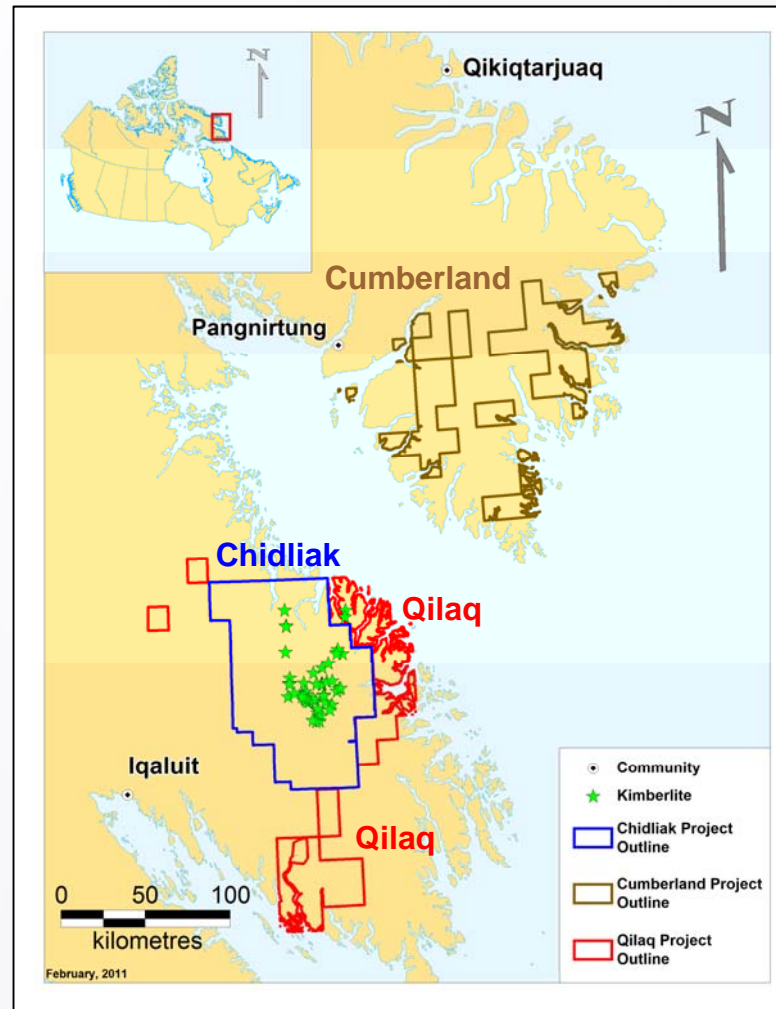
PEREGRINE  
DIAMONDS LTD.

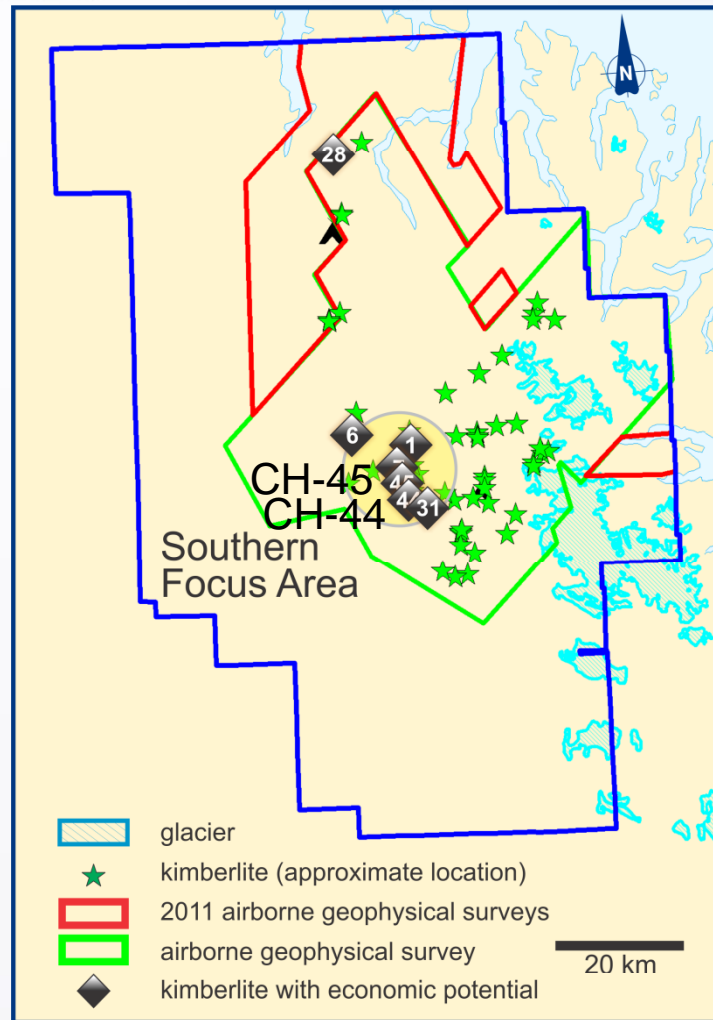
# Chidliak Project, Nunavut Exploration Update



November 21, 2011

TSX: PGD  
[www.pdiam.com](http://www.pdiam.com)





Kimberlite	Sample Weight (kg)	Numbers of Diamonds According to Sieve Size Fraction (mm)										Total Diamonds	Carats (+0.850 mm size)
		+0.106 -0.150	+0.150 -0.212	+0.212 -0.300	+0.300 -0.425	+0.425 -0.600	+0.600 -0.850	+0.850 -1.180	+1.180 -1.700	+1.700 -2.360	+2.36 -3.350		
CH-44 Core	535.1	310	168	130	81	42	22	10	3	0	0	766	0.197
CH-44* RC	312.2	431	208	146	72	31	13	6	2	0	1	910	0.450

\* CH-44 results from RC drilling previously announced on November 25, 2010.

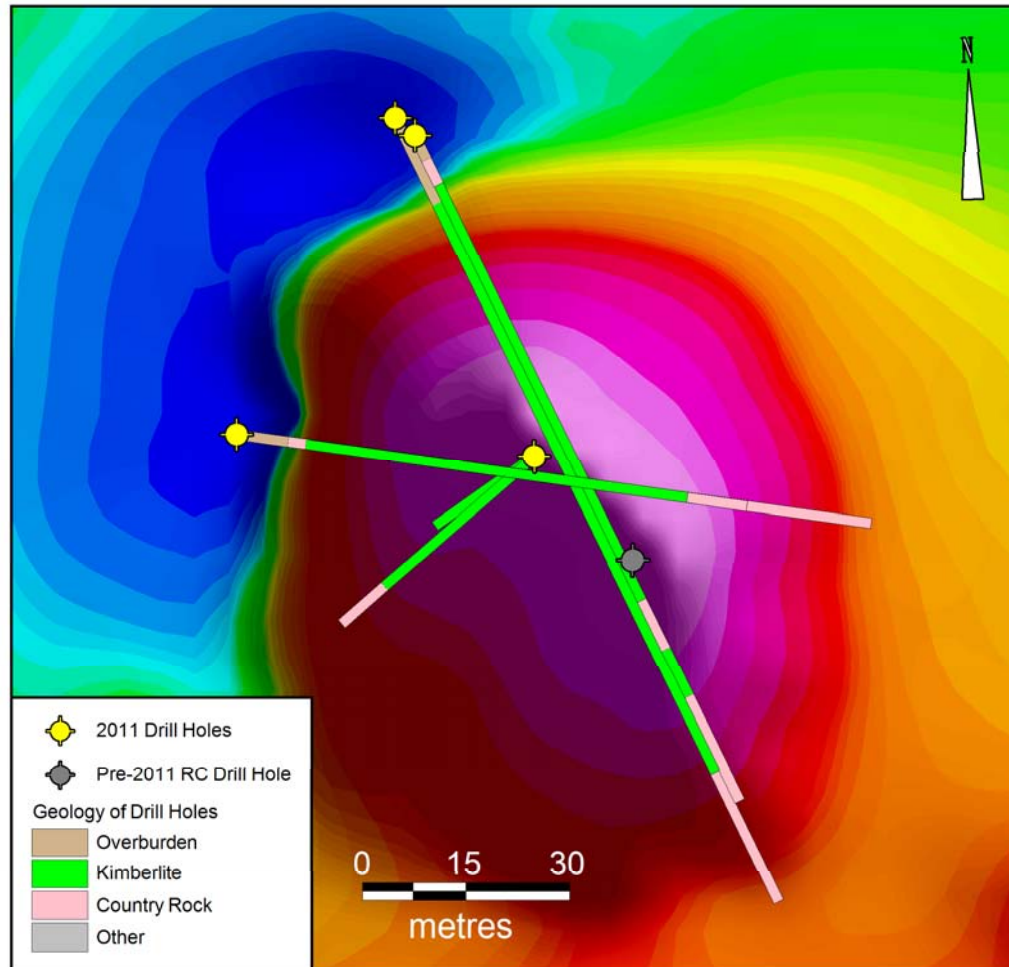


0.05 ct diamond



0.03 ct diamond

All microdiamond analyses were completed by the Saskatchewan Research Council Geoanalytical Laboratories (SRC), which is accredited to the ISO/IEC 17025 standard for microdiamond recovery via caustic fusion.



*Image created from ground magnetics*

Kimberlite	Sample Weight (kg)	Numbers of Diamonds According to Sieve Size Fraction (mm)										Total Diamonds	Carats (+0.850 mm size)
		+0.106 -0.150	+0.150 -0.212	+0.212 -0.300	+0.300 -0.425	+0.425 -0.600	+0.600 -0.850	+0.850 -1.180	+1.180 -1.700	+1.700 -2.360	+2.36 -3.350		
CH-45MK Core	196.9	42	27	18	17	8	2	0	0	0	0	114	-
CH-45VK Core	177.9	9	18	11	12	2	2	0	0	1	1	56	0.28
CH-45 Core Total	314.8	51	45	29	29	10	4	0	0	1	1	170	0.28
CH-45** RC	173.6	55	39	30	19	6	7	1	0	1	0	158	0.091

Note: MK refers to magmatic kimberlite and VK refers to volcanoclastic kimberlite.

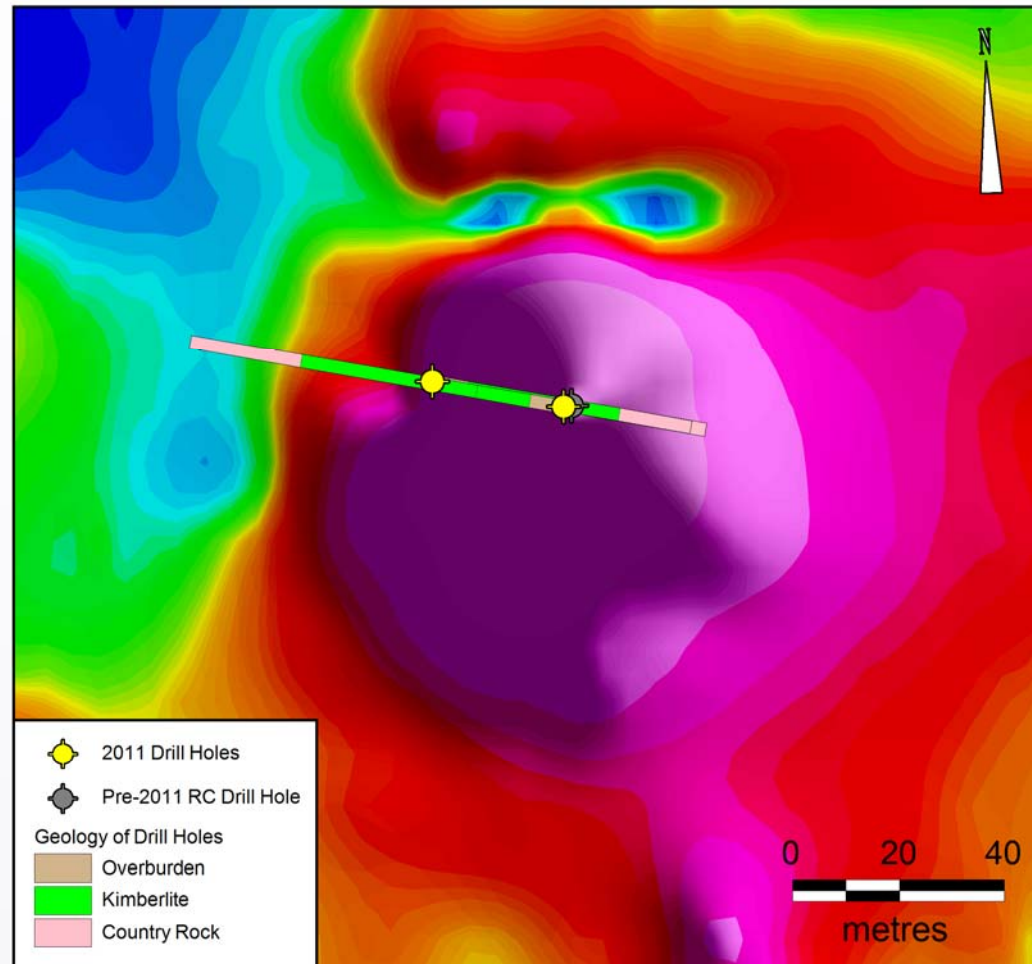
\*\* CH-45 results from RC drilling previously announced on January 13, 2011.



0.05 ct diamond



0.23 ct diamond



*Image created from ground magnetics*