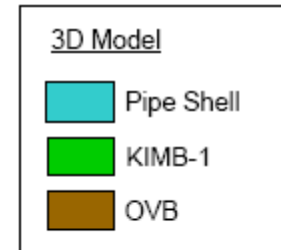
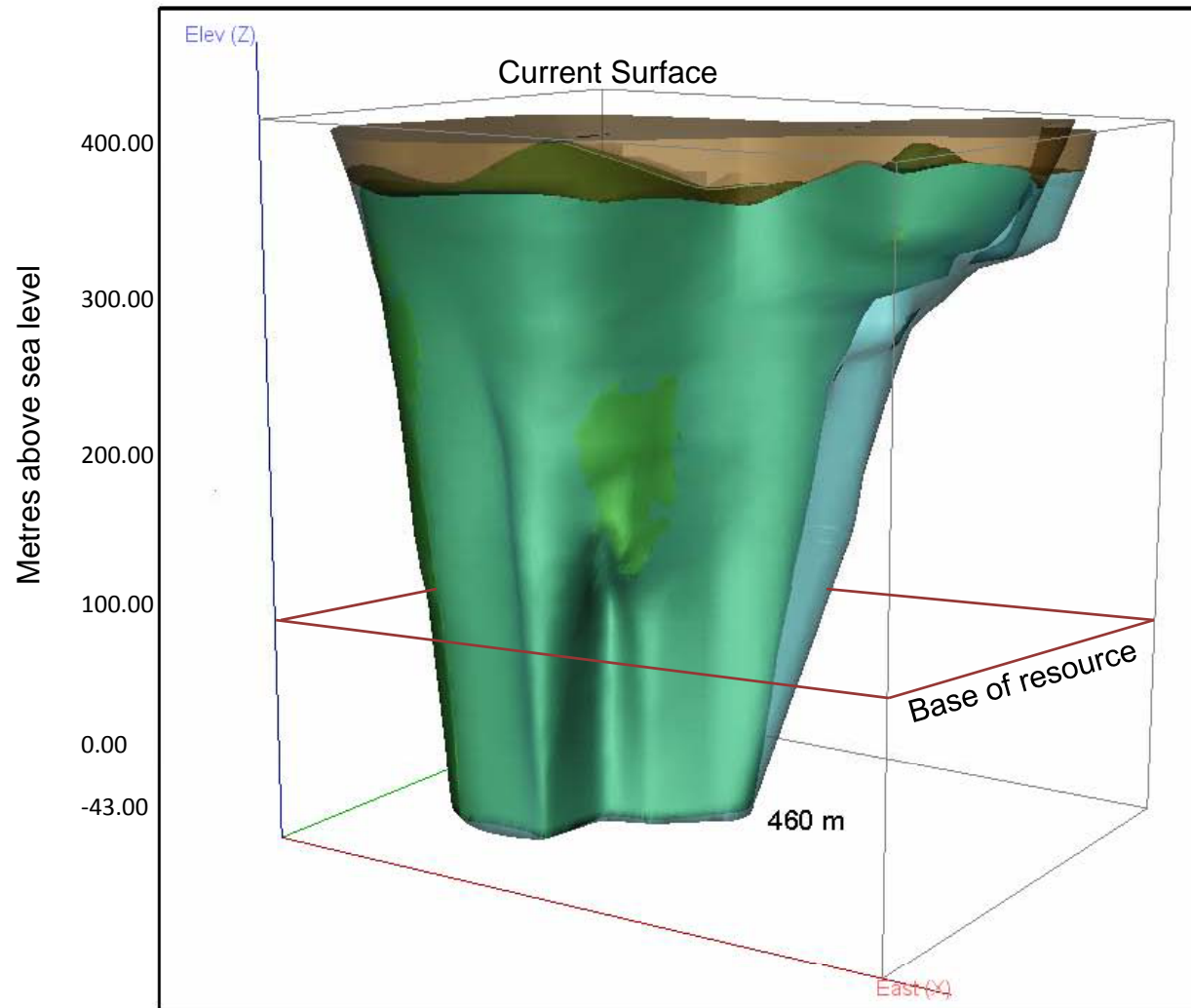


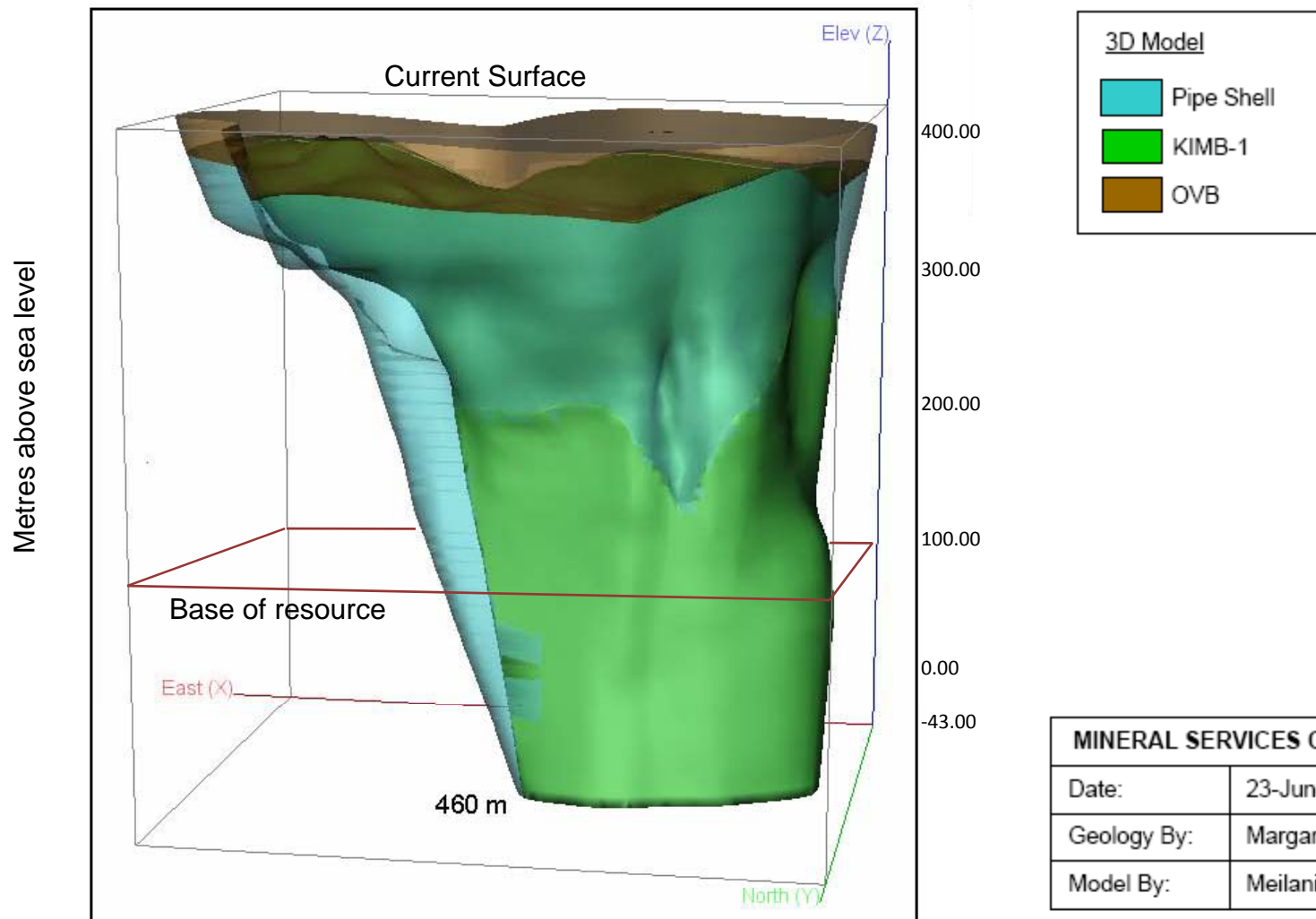
# DO27 – Pipe Shell Showing KIMB-1: Looking North-West



<b>MINERAL SERVICES CANADA INC.</b>	
Date:	23-June-08
Geology By:	Margaret Harder
Model By:	Meilani Z. Smith

Vantage Point 1

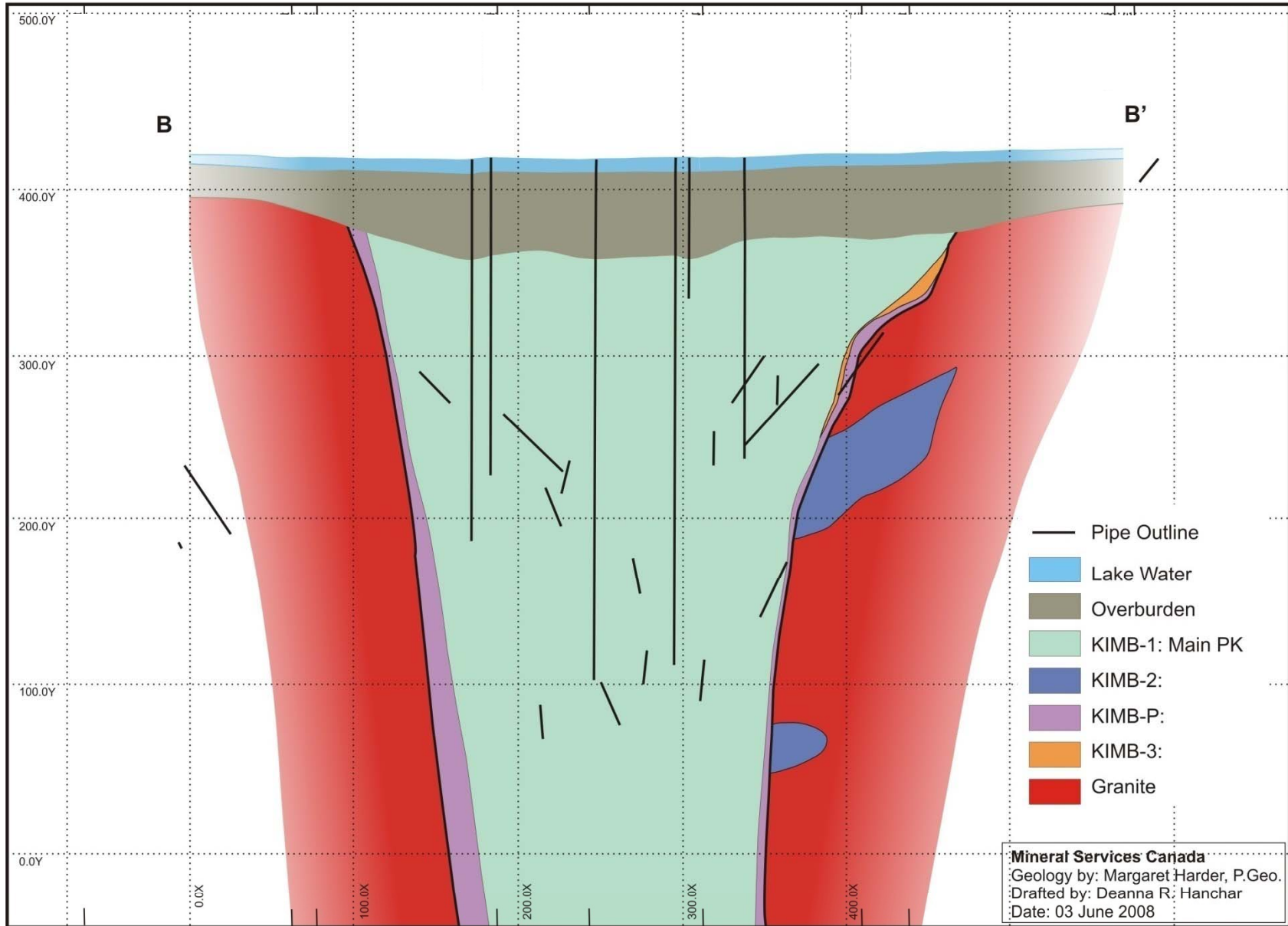
# DO27 – Pipe Shell Showing KIMB-1: Looking South-East



<b>MINERAL SERVICES CANADA INC.</b>	
Date:	23-June-08
Geology By:	Margaret Harder
Model By:	Meilani Z. Smith

Vantage Point 2

# PRELIMINARY GEOLOGY, DO27 NE-SW SECTION



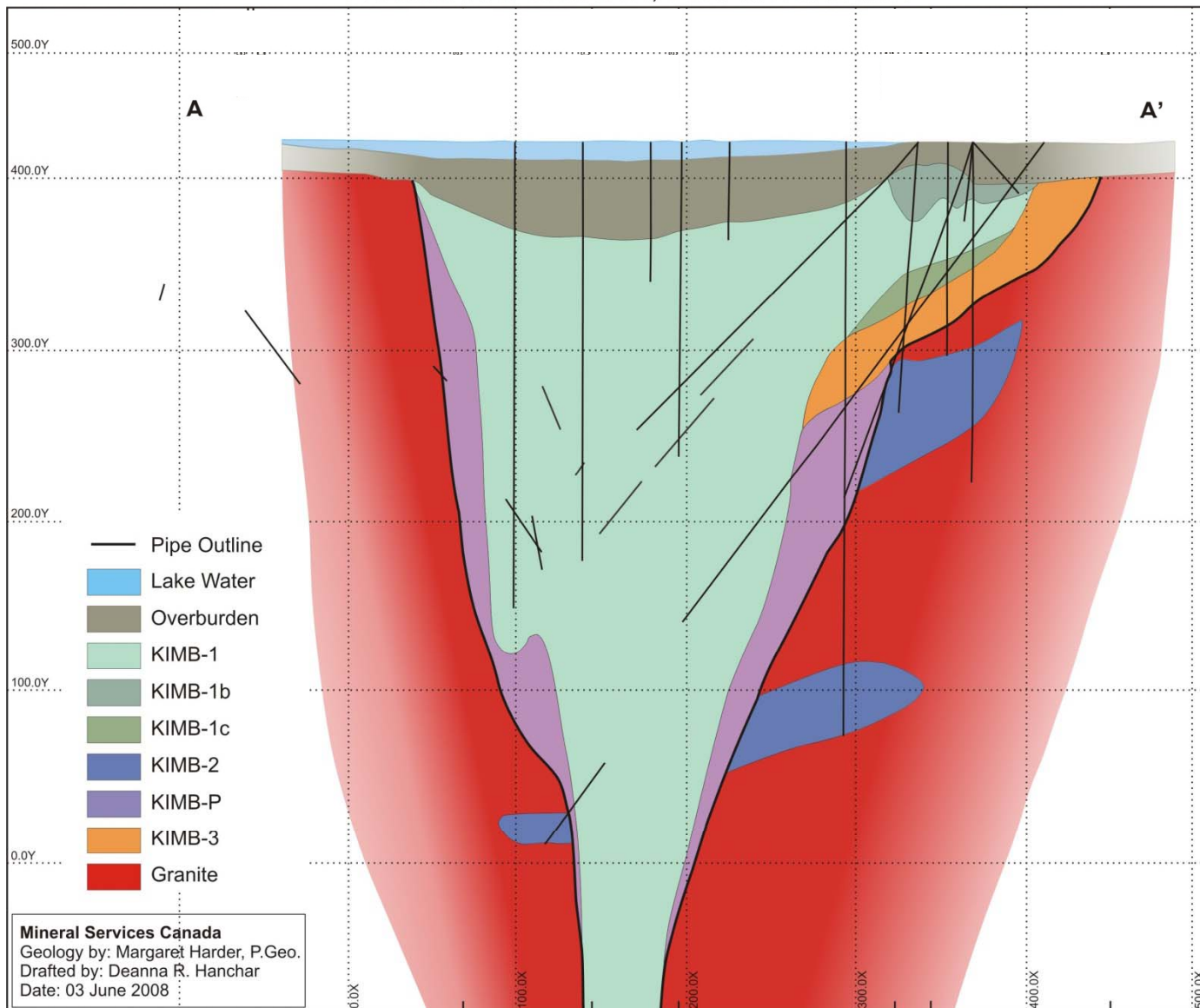
KIMB-1: Pyroclastic kimberlite – main pipe infill, undifferentiated

KIMB-2: Magmatic (coherent) kimberlite, undifferentiated

KIMB-P: Volcaniclastic kimberlite infilling the DO-27 pipe which cannot be further subdivided into KIMB-1 or KIMB-3

KIMB-3: Complex volcaniclastic kimberlite; base of NE lobe; undifferentiated

## PRELIMINARY GEOLOGY, DO27 W-E SECTION



KIMB-1: Pyroclastic kimberlite – main pipe infill, undifferentiated

KIMB-1b: KIMB-1 subdivision comprising PK with inter-layered PK with mud-rich PK – seen at top of holes in NE lobe

KIMB-1c: KIMB-1 subdivision comprising PK characterized by higher abundance of xenoliths – ‘spotted’ kimberlite

KIMB-2: Magmatic (coherent) kimberlite, undifferentiated

KIMB-P: Volcaniclastic kimberlite infilling the DO-27 pipe which cannot be further subdivided into KIMB-1 or KIMB-3

KIMB-3: Complex volcaniclastic kimberlite; base of NE lobe; undifferentiated