

Chidliak Property, Baffin Island, Nunavut

Canada's Newest Diamond District

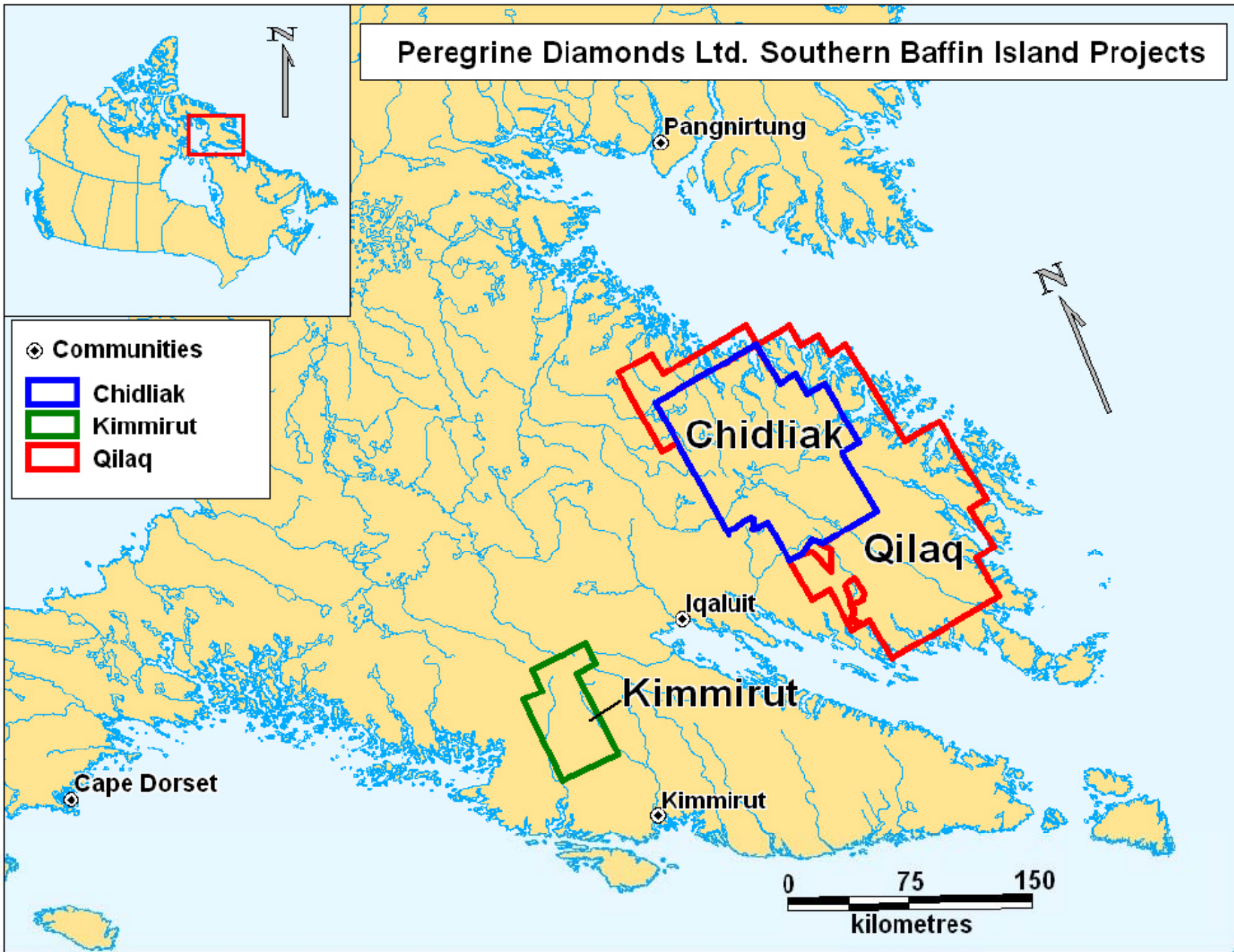
2009 Exploration Update

May 26, 2009

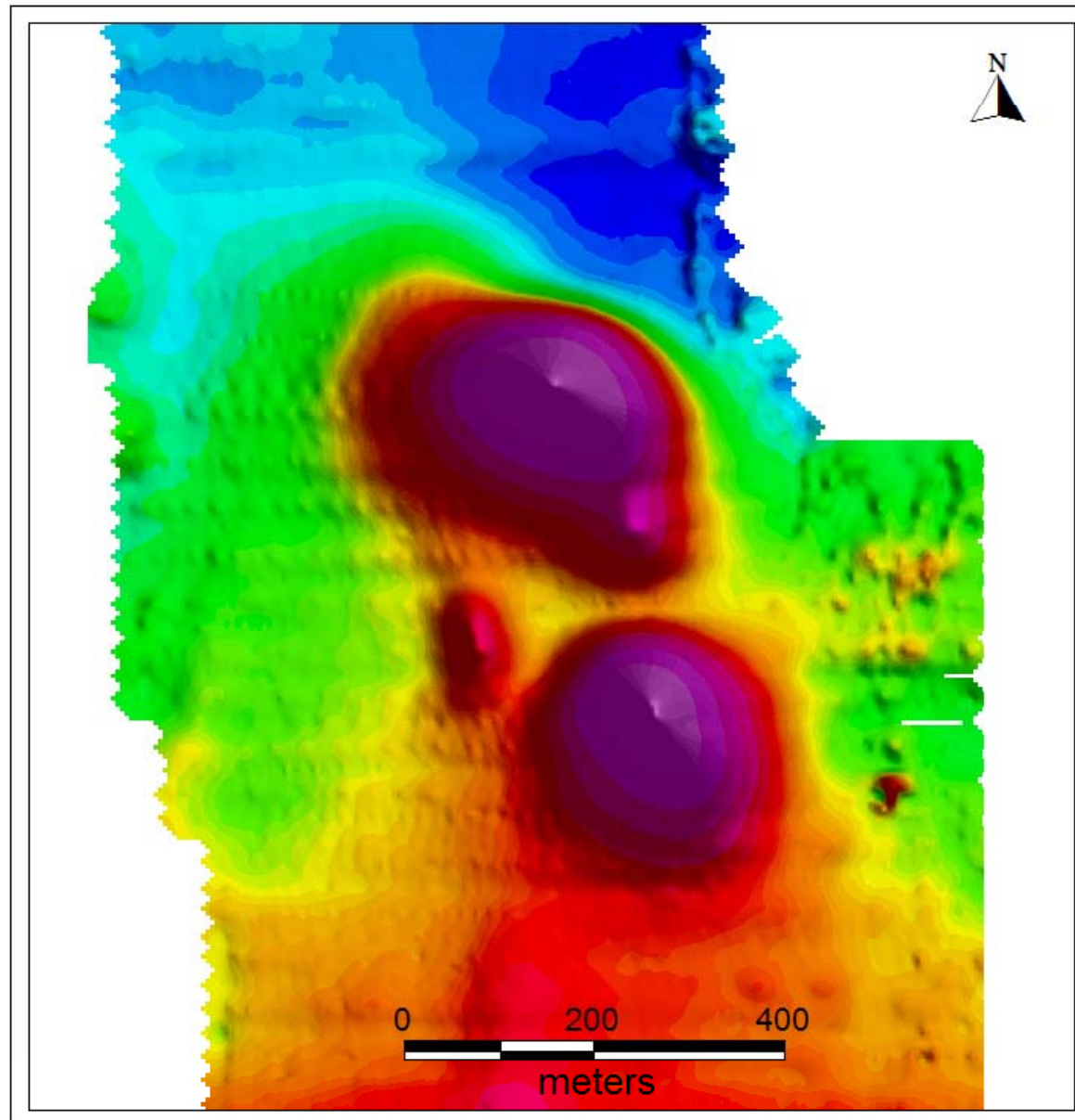


PEREGRINE
DIAMONDS LTD.

Peregrine Diamonds Ltd. Southern Baffin Island Projects

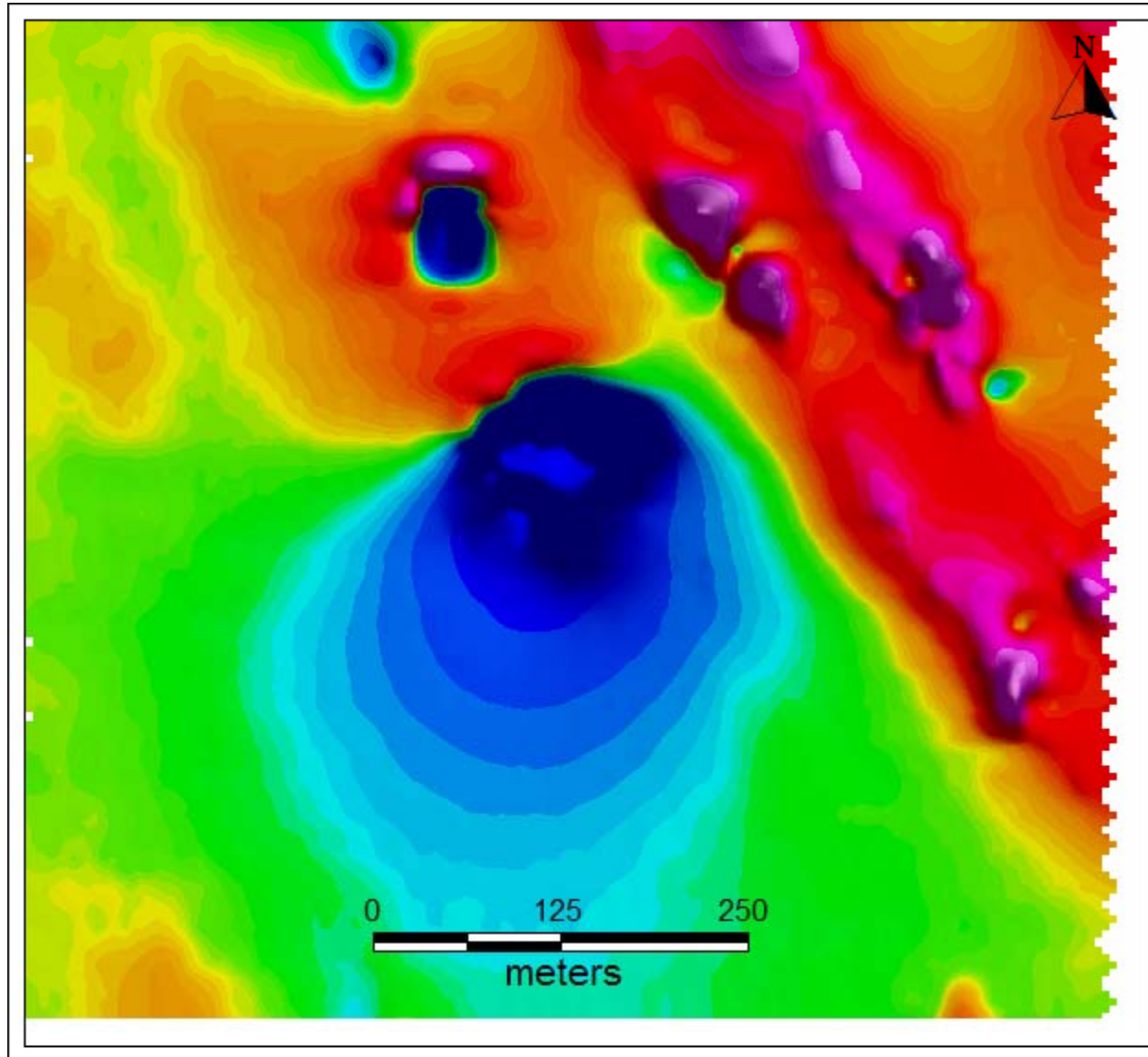


ANOMALIES 165 AND 166



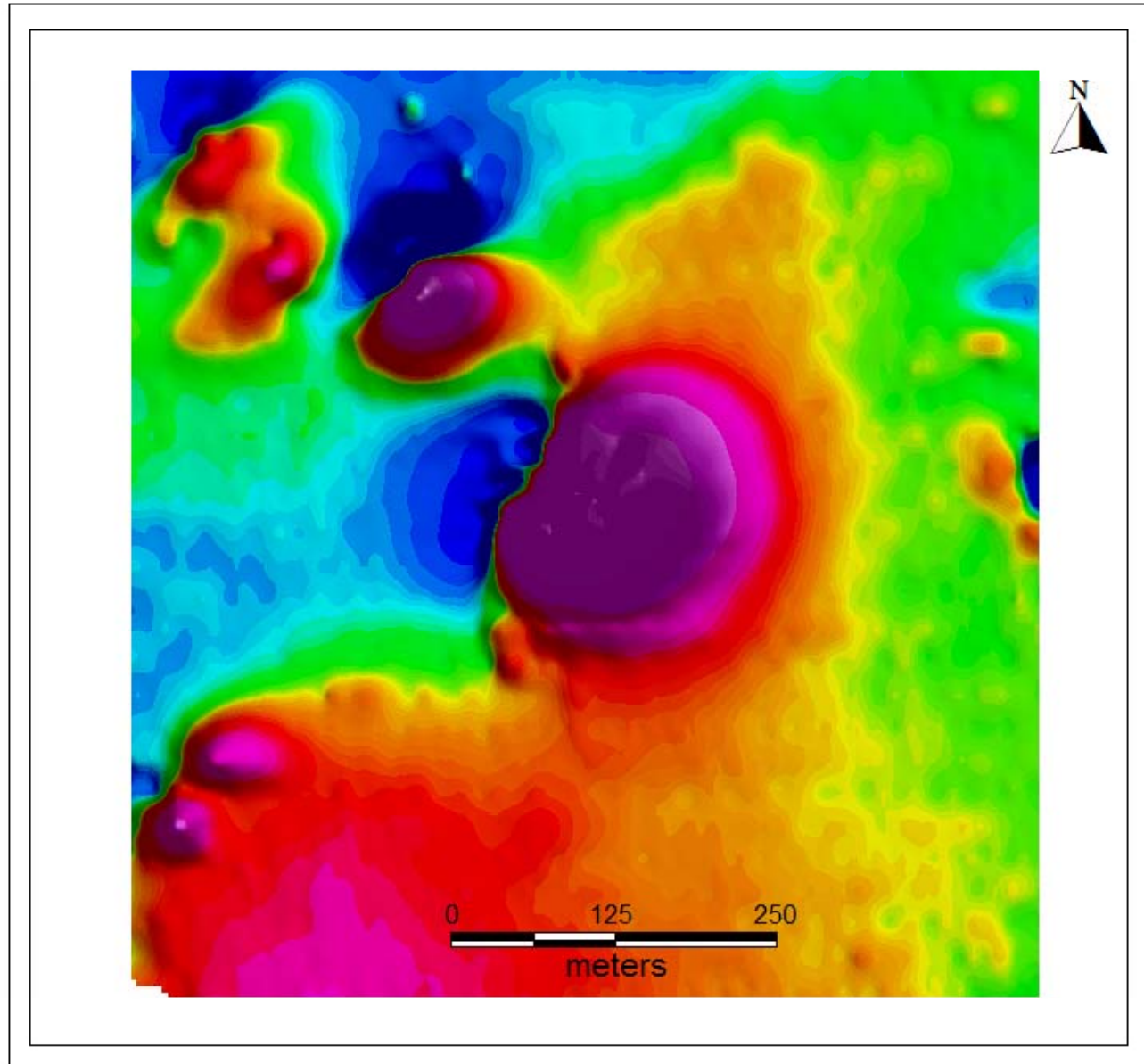
Ground magnetic survey data over magnetic high anomalies 165 (north) and 166 (south). 50 km north of the CH-1 kimberlite.

ANOMALY 050



Ground magnetic survey data over magnetic low anomaly 050. Located approx. 10 km northwest of the CH-1 kimberlite.

ANOMALY 087



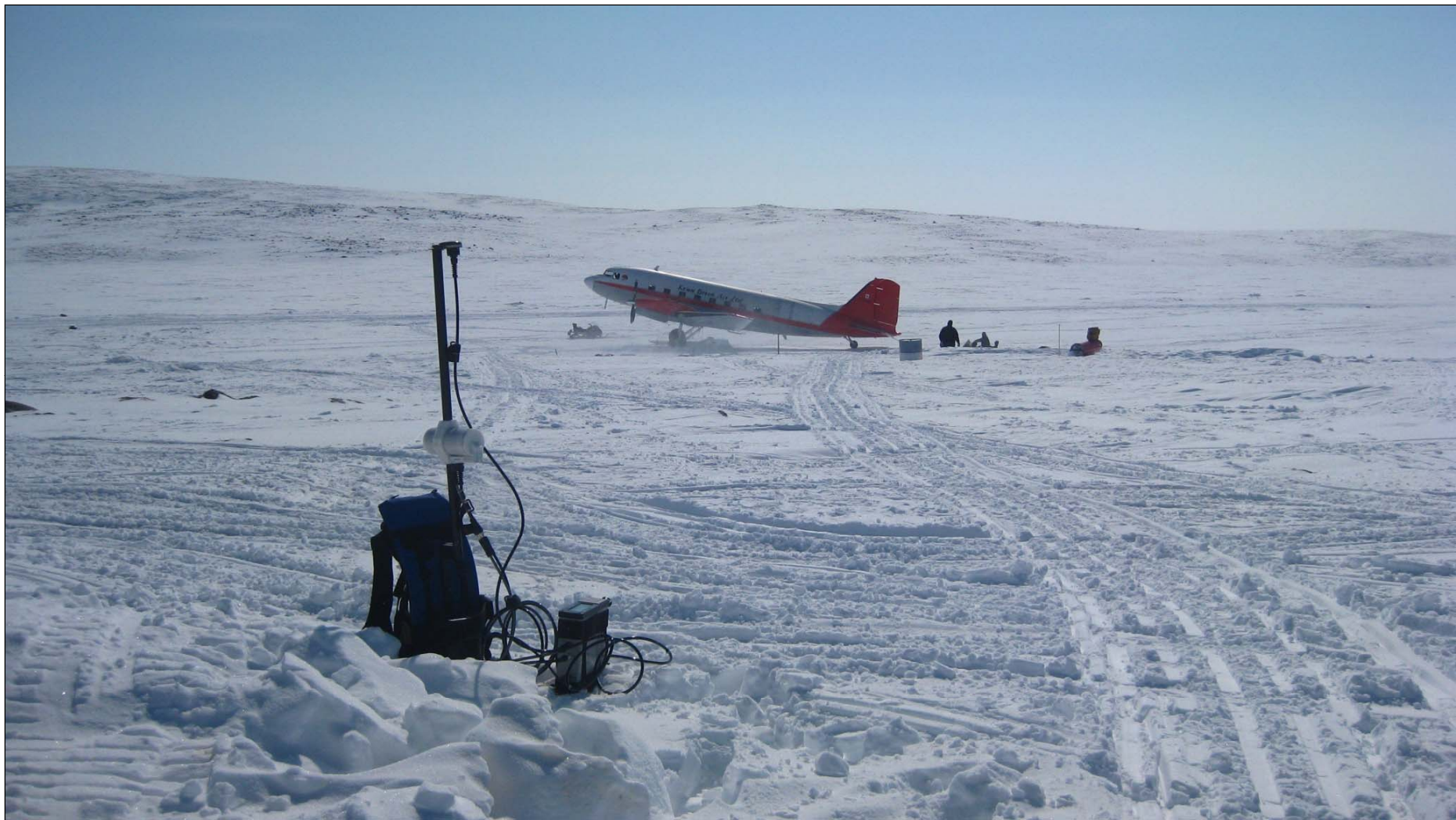
Ground magnetic survey data over magnetic high anomaly 087. 2 km west of the CH-1 kimberlite



A Caterpillar® Multi-Terrain Loader was mobilized to Chidliak overland in May 2009 using Bombardier Sno-Cats.



The newly constructed Sunrise Camp on the Chidliak property, May 2009.



DC-3 aircraft on ice airstrip on lake at Sunrise Camp with a magnetometer in the foreground, May 2009.



Ground magnetic surveying at Chidliak, May 2009.



Ground magnetic surveying at Chidliak utilizing a snowmobile and wooden sled, May 2009.



Aerial view of snow cover at the CH-1 kimberlite, May 12, 2009. Trench in snow being excavated by Bombardier Sno-Cat.



Trench in approximately four metres of snow covering the CH-1 kimberlite outcrop, May 12, 2009. Trench excavated by Bombardier Sno-Cat.